

PEIMS Mid-Year Submission 2021-2022

December 9, 2021
Region One Education Service Center
Information Technology – PEIMS Department

Agenda

- › Financial Reporting in PEIMS
- › Use of this Data
- › Mid-year Submission Requirements in TEDS
- › TSDS Submission Process
- › TSDS PEIMS Validation and QA Reports
- › Demo...



Financial Reporting in PEIMS

Fall Submission

- **Current** fiscal year budget data as of the as-of-date
- Funds reported
 - General Fund
 - Debt Service Fund
 - Food Service Fund
- Detail Revenue and summarized Expenditures (major object codes)

Mid-Year Submission

- Actual audited financial data for the **prior school year.**
- 12-month basis
- ALL funds are reported except 749, 799 (Enterprise and Proprietary and 8xx (Trust/Fiduciary) funds
- Detail Revenue and Expenditures (non-summarized)



Mid-Year Data is....

› Used by TEA:

- Report to the state legislature
- Monitor special program expenditures
- Audit districts
- Perform desk audits
- Calculate FIRST Ratings
([https://tea.texas.gov/Finance_and_Grants/Financial_Accountability/Financial_Integrity_Rating_System_of_Texas_\(FIRST\)/Financial_Integrity_Rating_System_of_Texas/](https://tea.texas.gov/Finance_and_Grants/Financial_Accountability/Financial_Integrity_Rating_System_of_Texas_(FIRST)/Financial_Integrity_Rating_System_of_Texas/))
- Determines District Indirect Rates
- Check for consistent SSA financial reporting

› Used by Districts:

- Administrative Cost Calculation
- Campus Budgets



Submission Requirements

Resource:

› Financial Accounting System Resource Guide (FASRG)

Resource:

› 2021-2022 Texas Education Data Standards (TEDS)

Resource:

› Due Date:

- First Submission: ESC - January 20, TEA - January 27
- Resubmission: ESC – February 3, TEA - February 10



Before TSDS.....Check your Finance System

- ☐ Ensure proper use of account codes for the current year (be informed of additional codes/deleted codes)
- ☐ Review campus list to ensure all campuses for last year will be reported
- ☐ If you are the SSA fiscal agent, report all the expenditures for each of your member district
- ☐ Verify your data was extracted/downloaded to your state reporting screens (revenues (object codes 5XXX) and expenditures (object codes 6XXX))
- ☐ Verify extracted data includes fund balances/net assets (Object Code 3XXX) in the "General Fund" (199)
- ☐ Review any crosswalks that need to be used that converts to the state mandated level



Complex Types (aka: Record)

Education Organization Category



InterchangeEducationOrganization

- 10010 - LocalEducationAgencyExtension Complex Type
- 10020 - SchoolExtension Complex Type



InterchangeSSAOrganizationAssociation

- 10011 - SSAOrgAssociationExtension Complex Type

Finance Category

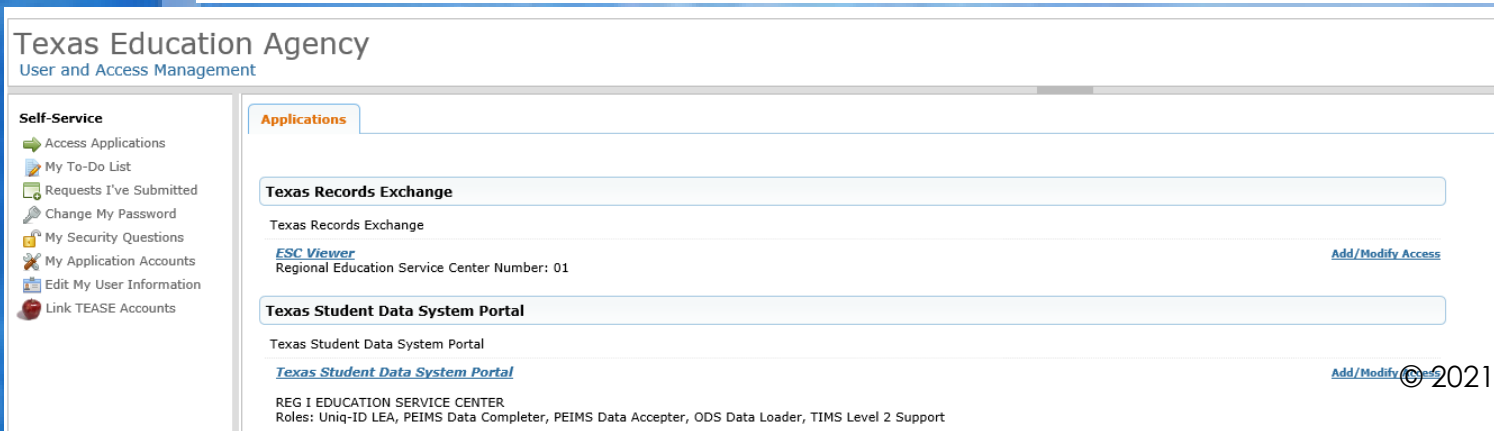


InterchangeFinance

- 20032 - ActualExtension Complex Type
- 20033 - SharedServiceArrangementExtension Complex Type

TSDS Submission Process

- › TEAL Login Portal - <https://tealprod.tea.state.tx.us/>
 - Texas Student Data System Portal
 - PEIMS Coordinator needs TSDS Roles: PEIMS Data Completer, ODS Data Loader, TIMS Level 1 Support
 - District Superintendent needs TSDS Roles: PEIMS Data Approver
 - Requesting access:
<https://www.esc1.net/cms/lib/TX21000366/Centricity/Domain/137/5%20Requesting%20Access%20to%20TSDS.pdf>



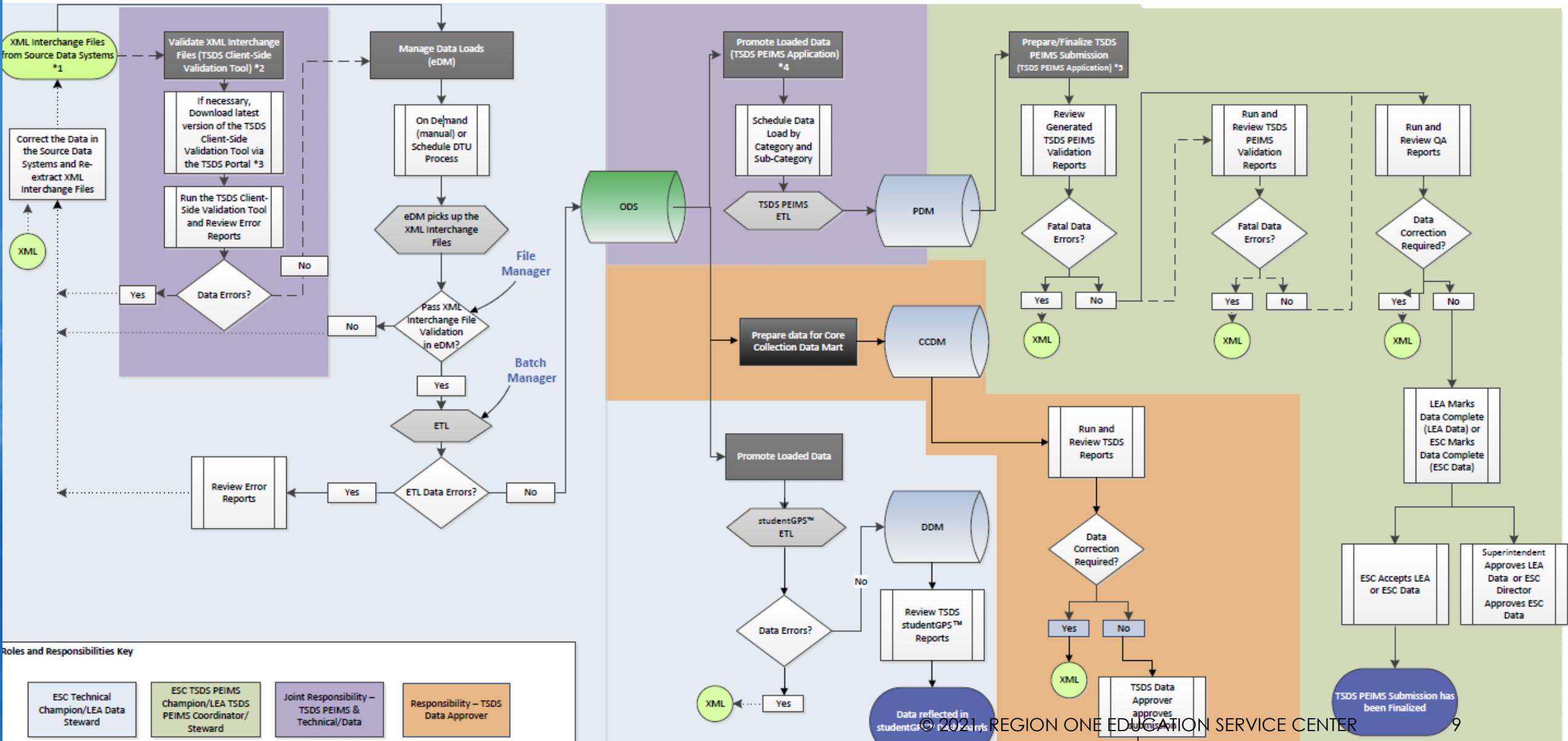
The screenshot shows the 'Texas Education Agency User and Access Management' interface. On the left is a 'Self-Service' sidebar with links like 'Access Applications', 'My To-Do List', and 'Change My Password'. The main area has an 'Applications' tab with two sections: 'Texas Records Exchange' and 'Texas Student Data System Portal'. Each section includes a description, a link to the application, and an 'Add/Modify Access' button. The 'Texas Student Data System Portal' section also lists roles: 'Uniq-ID LEA, PEIMS Data Completer, PEIMS Data Acceptor, ODS Data Loader, TIMS Level 2 Support'.



The screenshot shows the 'tsds texas student data system' interface. The top navigation bar includes 'Unique ID', 'eDM Data Loads', 'PEIMS', 'Utilities', and 'Support'. The main content area is titled 'Welcome to PEIMS' and provides information about the Public Education Information System (PEIMS). It lists the new TSDS PEIMS module's goals: improving system capacity, allowing loading of PEIMS data from the first day of school, and allowing coordinators to load subsets of data. At the bottom, there are buttons for 'Manage', 'Promote', 'Validate', 'Prepare', and 'View Reports'.

TSDS High Level End User Process Map

Document Number: TSDS-Tech-R001-D001





Interchange Load Order & Collection Submission Table

		TSDS PEIMS			
		1	2	3	4
	INTERCHANGES	FALL	MDYR	SUMR	EXYR
1	InterchangeEducationOrganizationExtension	1	1	1	1
2	InterchangeEducationOrgCalendar ¹			2	2
3	InterchangeMasterScheduleExtension ¹			3	3
4	InterchangeStudentExtension ¹	2		4	4
5	InterchangeStudentEnrollmentExtension ^{1, 3, 4}	3		5	5
6	InterchangeStaffAssociationExtension* ¹	4			6
7	InterchangeStudentAttendanceExtension ^{1, 4}			6	7
8	InterchangeStudentDisciplineExtension ^{1, 4}			7	
9	InterchangeStudentTranscriptExtension ^{1, 3, 4, 5}			8	8
10	InterchangeStudentProgramExtension ^{1, 4}	5		9	9
11	InterchangeSSAOrganizationAssociationExtension ¹	6	2		
12	InterchangeFinanceExtension ¹	7	3		
13	InterchangeStudentRestraintEventExtension ^{1, 4}			10	

Note: Numbers under the collection heading signify the load order of the interchange for the submission. Superscripted Numbers at the end of the interchange name represent the interchange # that it has referential integrity with.

TSDS Submission Process

1. Extract data from Finance System
2. Validate files using Client-Side Validation Tool
3. Zip interchange files
4. Upload Zipped File to eDM Data Loads 
(use collection 2022 MDYR1) (or 2022 MDYR2
for Resubmission)
5. Batch Validated Files 

TSDS Submission Process

6. Promote All Categories in TSDS PEIMS

- Check Error Report

TSDS Promotion Categories

Category / Subcategories	Interchanges to Promote
Education Organization/Local Education Agency	InterchangeEducationOrganizationExtension
Education Organization/Campus	InterchangeEducationOrganizationExtension
Education Organization/SSA Organization Association	InterchangeSSAOrganizationAssociationExtension
Finance/Actual	InterchangeFinanceExtension
Finance/ Shared Services Arrangement Actual	InterchangeFinanceExtension



7. Validate All Categories

TSDS PEIMS Validation: Business Rules

- Run Validations Rule Count report
- Fatals (must be corrected)
- Special Warnings and Warnings must be reviewed
- Use [TEDS](#) PEIMS Business Rules & Validations
- Use FASRG for determining proper coding (Account Code Matrix)
- Use [TEDS Organization Code Reporting Guidelines](#)
- Ex:

Category ↑	Subcategory ↑	Severity ↑	Message ↑	
Finance	Actual	Fatal	20032-0094: If OBJECT-CODE is "6619" or "6629", then FUNCTION-CODE must be "51" or "81". Data: OBJECT-CODE: 6629, FUNCTION-CODE: 35 Identifying Info: 108905, 9, 101, 35, 6629, 999, 99	
Business Context	20032-0094	If OBJECT-CODE is "6619" or "6629", then FUNCTION-CODE must be "51" or "81".		F
		If the actual financial data reported includes amounts where the TX-ObjectCode is "land purchase and improvement" (6619) or "building purchase, construction, or improvements" (6629), then the TX-FunctionCode must be "facilities maintenance and operations" (51), or "facilities acquisition and construction" (81).		

8. Correct in Source System and repeat steps above. (When re-batching use may need to use the Delete Utility options)

Manage Data Loads Delete Utility

Delete Name	Interchanges to Reload After Delete
Delete PEIMS Finance – LEA	InterchangeFinanceExtension
Delete PEIMS Mid-Year – LEA	InterchangeEducationOrganizationExtension InterchangeFinanceExtension InterchangeSSAOrganizationAssociationExtension

Menu

Home

File Manager

Batch Manager

Delete Utility

Interchange Menu

Interchange Upload

External Links

Texas Student Data System

Texas Education Agency

View Batch

Add optional comments below or
To create a batch with the 2 file(s) in the cart,
press the 'Process Batch' button below:

Process Batch

Comments

Add comments associated with this batch (limited to 255 characters):

Delete Options

Perform Delete Before Load:

☒ Yes ☐ No

Select Delete:

Select Delete Option
Select Delete Option
Delete PEIMS Mid Year - LEA
Delete PEIMS Finance - LEA

Data Files

<input type="checkbox"/>	File ID	Template/Interchange	Collection	File Name
<input type="checkbox"/>	3220223	SSAOrganizationAssociationExtension	2020 MDYR1	108950_000_2020MDYR1_
<input type="checkbox"/>	3220224	FinanceExtension	2020 MDYR1	108950_000_2020MDYR1_

Displaying 1 to 2 of 2

Remove From Batch

To create a batch with the 2 file(s) in the cart, press the 'Process Batch' button below:

Process Batch

TSDS Submission Process

9. Generate Reports and Distribute for Verification
10. Complete the Extended Year Submission
11. Superintendent Approves the Submission
12. District determines if Resubmission is needed

Resource:



- ☐ Region One TSDS PEIMS:
<http://www.esc1.net/Page/2564>
- ☐ Client Side Validation Tool
- ☐ eDM Loading Data into the ODS
- ☐ TSDS PEIMS Application Instructions

TSDS PEIMS Quality Assurance Reports

diana.perez2 (1)

dperez@esc1.net

Support

Help

Exit

REG I EDUCATION (108950)2021-2022MDYRFirstGO

tsds

texas student data system

tsdsPEIMS

Home

Data Promotions

Validations

Prepare / Finalize Submission

Access Data

View Reports

Administration

Home » View Reports

View Reports

PEIMS Reports Help

Standard Reports

The core group of PEIMS reports. Availability: These reports are available at any time and reflect the current state of the data.

Audit

Hide Reports List

Report # ↑	Report Name ↓	XLS		PDF		CSV	
		Status	Run	Status	Run	Status	Run
PDM2-102-001	Schedule of Federal Funds				↻		
PDM2-102-002	Fund Balances Section of Balance Sheet - Governmental Funds				↻		
PDM2-102-003	Statement of Revenues, Expenditures, & Changes in Fund Balances - Governmental Funds				↻		



Click for explanation of reports

Resource:

- ❑ Region One TSDS PEIMS:
<http://www.esc1.net/Page/2564>
- ❑ TSDS PEIMS Reports.xlsx

TSDS PEIMS Validation and QA Reports

1. Provide Finance Department all PEIMS Mid-Year reports.
2. Compare external audit reports (schedules C1 or C2 and C3) to the TSDS PEIMS Reports > Audit >
 - a. PDM2-102-002 Fund Balances Section of Balance Sheet - Governmental Funds
 - b. PDM2-102-003 Statement of Revenues, Expenditures, & Changes in Fund Balances – Governmental Funds and verify that totals match.
3. Verify that the PEIMS submission fund balances are correct using TSDS PEIMS Reports > Audit > PDM2-102-002 Fund Balances Section of Balance Sheet - Governmental Funds
4. Check the district's Administrative Cost Ratio using TSDS PEIMS Reports > Actual >
 - a. PDM2-100-008 Worksheet for Calculating Administrative Cost Ratio
 - b. PDM2-100-012 Mid-Year Financial Accountability Rating Indicators
5. Make sure data reflects all the district's Shared Services Arrangement Data for each type of SSA that exists in the district. If your district is the fiscal agent for an SSA then your data should also contain SSA actual records on behalf of each SSA member and each SSA type. TSDS PEIMS Reports > Actual >
 - a. PDM2-100-018 Shared Services Arrangement
 - b. PDM2-100-017 SSA Actual Financial Data

Examples - PDM2-102-002 Fund Balances Section of Balance Sheet - Governmental Funds

Texas Education Agency
PDM2-102-002
v17.2.1

TSDS PEIMS FUND BALANCES SECTION OF BALANCE SHEET - GOVERNMENTAL FUNDS
ESC-level Data

Monday 01/23/2017 8:37 AM
Page 1 of 1

2016 - 2017 Mid Year Collection, 1st Submission: Fiscal Year 2016

ESC: 108950 - REG I EDUCATION SERVICE CENTER

	100-199 General Fund						Other Governmental Funds	Total Governmental Funds
FUND BALANCES:								
RESERVED FOR:								
3430 Non-Spendbl Pre	\$ 2,478 ✓	0	\$ 0	\$ 0	\$ 0	\$ 0	0	2,478 ✓
3450 Restrict Fnd S/F	0	0	0	0	0	0	1,576,659 ✓	1,576,659 ✓
3490 Restrict Fnd Oth	885,721 ✓	0	0	0	0	0	0	885,721 ✓
DESIGNATED FOR:								
3510 Commit Fnd Con	500,000 ✓	0	0	0	0	0	3,234,324 ✓	3,734,324 ✓
3545 Commit Fnd Oth	6,363,730 ✓	0	0	0	0	0	0	6,363,730 ✓
UNRESERVED:								
3600 Unassign Fnd Bal	3,800,000 ✓	0	0	0	0	0	0	3,800,000 ✓
300X TOTAL FUND BALANCES	\$ 11,551,929 ✓	0	\$ 0	\$ 0	\$ 0	\$ 0	4,810,983 ✓	16,362,912 ✓

300X-360X contains the sum of object codes from 340X-360X ONLY

REGION ONE EDUCATION SERVICE CENTER
BALANCE SHEET
GOVERNMENTAL FUNDS
AUGUST 31, 2016

Data Control Codes	10 General Fund	GEAR Up	Early Childhood Intervention	Capital Projects Fund	Other Nonmajor Funds	Total Governmental Funds
ASSETS						
1110 Cash and Cash Equivalents	\$ 725,259	\$ -	\$ 175,868	\$ 34,324	\$ 248,771	\$ 1,184,222
1120 Investments - Current	7,378,182	-	-	3,200,000	1,500,000	12,078,182
1240 Receivables from Other Governments	2,217,560	2,071,088	294,615	-	2,391,318	6,974,581
1260 Due from Other Funds	3,555,580	-	-	-	250,000	3,805,580
1290 Other Receivables	134,083	-	-	-	-	134,083
1410 Prepayments	2,478	-	-	-	420,995	423,473
1000 Total Assets	\$ 14,013,142	\$ 2,071,088	\$ 470,483	\$ 3,234,324	\$ 4,811,084	\$ 24,600,121
LIABILITIES						
2110 Accounts Payable	\$ 534,903	\$ 97,766	\$ 39,492	\$ -	\$ 262,422	\$ 934,583
2150 Payroll Deductions and Withholdings Payable	199,142	-	-	-	-	199,142
2160 Accrued Wages Payable	161,258	-	-	-	47,424	208,682
2170 Due to Other Funds	1,092,938	672,079	-	-	2,495,563	4,260,580
2180 Due to Other Governments	78,706	1,301,243	430,991	-	137,323	1,948,263
2300 Unearned Revenues	394,266	-	-	-	291,693	685,959
2000 Total Liabilities	2,461,213	2,071,088	470,483	-	3,234,425	8,237,209
FUND BALANCES						
Nonspendable Fund Balance:						
3430 Prepaid Items	✓ 2,478	-	-	-	-	2,478
Restricted Fund Balance:						
3450 Federal or State Funds Grant Restriction	-	-	-	-	1,576,659	1,576,659
3490 Other Restricted Fund Balance	✓ 885,721	-	-	-	-	885,721
Committed Fund Balance:						
3510 Construction	500,000	-	-	3,234,324	-	3,734,324
3545 Other Committed Fund Balance	6,363,730	-	-	-	-	6,363,730
3600 Unassigned Fund Balance	3,800,000	-	-	-	-	3,800,000
3000 Total Fund Balances	11,551,929	-	-	3,234,324	1,576,659	16,362,912
4000 Total Liabilities and Fund Balances	\$ 14,013,142	\$ 2,071,088	\$ 470,483	\$ 3,234,324	\$ 4,811,084	\$ 24,600,121

Examples-PDM2-102-003 Statement of Revenues, Expenditures, & Changes in Fund Balances

Texas Education Agency
PDM2-102-003
v17.2.1

TSDS PEIMS STATEMENT OF REVENUES, EXPENDITURES, & CHANGES IN FUND BALANCES -
Governmental Funds

Monday 01/23/2017 8:38 AM
Page 1 of 2

ESC: 108950 - REG I EDUCATION SERVICE CENTER

2016 - 2017 Mid Year Collection, 1st Submission: Fiscal Year 2016
Unallocated

	100-199 General Fund					Other Governmental Funds	Total Governmental Funds
REVENUES:							
57XX Local Program Revenues	\$ 18,474,635	\$	0	\$	0	\$ 844,238	\$ 19,318,873
58XX State Program Revenues	3,024,249	0	0	0	0	829,300	3,853,549
59XX Federal Program Revenues	961,558	0	0	0	0	19,436,846	20,398,405
6020 - Total Revenues	22,460,443	0	0	0	0	21,110,384	43,570,827
EXPENDITURES:							
11 Instruction	5,840,253	0	0	0	0	7,606,551	13,446,804
12 Instr Resources/Media Services	1,263,203	0	0	0	0	0	1,263,203
13 Curriculum/Instr Stf Dvlpmt	4,610,343	0	0	0	0	6,605,663	11,216,006
21 Instructional Leadership	398,807	0	0	0	0	1,604,636	2,003,443
23 School Leadership	0	0	0	0	0	691,262	691,262
31 Guidance/Counseling/Eval Svcs	0	0	0	0	0	7,938	7,938
41 General Administration	2,105,993	0	0	0	0	66	2,106,059
51 Facilities Maintenance and Operations	827,637	0	0	0	0	963,044	1,791,281
53 Data Processing Services	3,158,114	0	0	0	0	469,456	3,627,570
61 Community Services	28,500	0	0	0	0	155,498	183,998
62 Dist Admin Support-ESCs only	2,701,543	0	0	0	0	1,529,841	4,231,384
93 Pymt-Agmt/Mem Dist of SSA	0	0	0	0	0	2,900,365	2,900,365
6030 - Total Expenditures	20,934,393	0	0	0	0	22,534,920	43,469,313
1100 - Excess (deficiency) of Revenues over Expenditures	1,526,050	0	0	0	0	(1,424,536)	101,514
OTHER FINANCING SOURCES (USES):							
7913 Proceeds from Capital Leases	117,527	0	0	0	0	0	117,527
7915 Operating Transfers In	0	0	0	0	0	575,225	575,225
8911 Operating Transfers Out	(500,000)	0	0	0	0	(75,225)	(575,225)
7080 - Total Other Financing Sources (Uses)	(382,473)	0	0	0	0	500,000	117,527
1200 - Net Change in Fund Balances	1,143,577	0	0	0	0	(924,536)	219,041

NOTE: 3XXX - TOTAL FUND BALANCES contains the sum of object codes from 340XX-36XX ONLY.
NOTE 2: Fiscal Year refers to the fiscal period that ended June 30 or August 31.

REGION ONE EDUCATION SERVICE CENTER STATEMENT OF REVENUES, EXPENDITURES, AND CHANGES IN FUND BALANCE GOVERNMENTAL FUNDS FOR THE YEAR ENDED AUGUST 31, 2016

Data Control Codes	10 General Fund	GEAR Up	Early Childhood Intervention	Capital Projects Fund	Other Nonmajor Funds	Total Governmental Funds
REVENUES:						
5700 Total Local and Intermediate Sources	\$ 18,474,635	\$ -	\$ -	\$ -	\$ 844,237	\$ 19,318,872
5800 State Program Revenues	3,024,249	-	247,145	-	582,156	3,853,550
5900 Federal Program Revenues	961,558	6,627,048	4,044,653	-	8,765,745	20,398,404
5020 Total Revenues	22,460,442	6,627,048	4,291,198	-	10,192,138	43,570,826
EXPENDITURES:						
Current:						
0011 Instruction	5,840,253	1,450,188	3,742,025	-	2,414,331	13,446,797
0012 Instructional Resources and Media Services	1,263,204	-	-	-	-	1,263,204
0013 Curriculum and Instructional Staff Development	4,610,343	1,961,359	3,153	-	4,641,147	11,216,002
0021 Instructional Leadership	398,806	153,597	805,172	-	645,869	2,003,444
0023 School Leadership	-	-	-	-	691,262	691,262
0031 Guidance, Counseling and Evaluation Services	-	-	-	-	7,938	7,938
0041 General Administration	2,105,995	-	-	-	66	2,106,061
0051 Facilities Maintenance and Operations	827,632	52,555	186,742	-	724,344	1,791,273
0053 Data Processing Services	3,158,107	24,061	116,362	-	329,029	3,627,559
0061 Community Services	28,500	113,184	-	-	42,312	183,996
0062 School District Administrative Support (ISC Only)	2,701,543	-	-	-	1,529,838	4,231,381
Intergovernmental:						
0093 Payments to Fiscal Agent/Member Districts of SSA	-	2,872,104	-	-	28,262	2,900,366
6030 Total Expenditures	20,934,383	6,627,048	4,853,454	-	11,054,398	43,469,283
1100 Excess (Deficiency) of Revenues Over (Under) Expenditures	1,526,059	-	(562,256)	-	(862,260)	101,543
OTHER FINANCING SOURCES (USES):						
7913 Capital Leases	117,527	-	-	-	-	117,527
7915 Transfers In	-	-	-	500,000	75,225	575,225
8911 Transfers Out (Use)	(500,000)	-	-	-	(75,225)	(575,225)
7080 Total Other Financing Sources (Uses)	(382,473)	-	-	500,000	-	117,527
1200 Net Change in Fund Balances	1,143,586	-	(562,256)	500,000	(862,260)	219,070
0100 Fund Balance - September 1 (Beginning)	10,408,343	-	993,247	2,734,324	2,438,919	16,574,833
1300 Prior Period Adjustment(s)	-	-	(430,991)	-	-	(430,991)
3000 Fund Balance - August 31 (Ending)	\$ 11,551,929	\$ -	\$ -	\$ 3,234,324	\$ 1,576,659	\$ 16,362,912

Example

Texas Education Agency
PDM2-100-008
v22.2.1

TSDS PEIMS WORKSHEET FOR CALCULATING ADMINISTRATIVE COST RATIO

LEA-level Data
Campuses: ALL

Thursday 12/09/2021 8:54 AM

Page 1 of 1

LEA:

2021 - 2022 Mid Year Collection, First Submission: Fiscal Year 2021
Unallocated

Functions		Expenditures in Fund 199				
Code	Description	Payroll Costs (61XX)	Professional & Contracted Services (62XX)	Supplies & Materials (63XX)	Other Operating Expenses (64XX)	
21	Instructional Leadership	793,225	96,189	31,318	25,071	Administrative Costs (A)
41	General Administration	3,477,823	956,130	122,562	593,666	
						\$6,095,984
11	Instruction	42,836,765	1,491,151	2,233,316	894,329	Instructional Costs (B)
12	Instructional resources & Media Services	690,663	47,503	40,251	15,295	
13	Curriculum Development & Instr Staff Development	1,399,767	222,101	325,468	128,237	
31	Guidance, Counseling, & Evaluation Services	4,337,655	77,370	29,650	61,335	
						\$54,830,856

Administrative Cost Standards		
Enrollment (ADA)		Standard
10,000 and above		0.1105
5,000 to 9,999		0.1250
1,000 to 4,999		0.1401
500 to 999		0.1561
Less than 500		0.2654
* Sparsity Adjustment Value		0.3614
		0.1112
		Administrative Cost Ratio (A/B)

Summary

(C) LEA ADA	54	(F) LEA Administrative Cost (A)	\$	6,095,984
(D) LEA Band	Less than 500	(G) Administrative Cost Standard (E x B)	\$	14,552,109
(E) LEA Standard	0.2654	(H) Under/(Over) (G - A)	\$	8,456,125
		(I) Under/(Over) Percent (H/G)		58.11%

MEETS the administrative cost standard

NOTE: Sparsity Adjustment Value denotes an LEA (by miles) that receives additional funding for being documented as sparse.

NOTE2: Sparsity Adjustment Value assignments are documented by the TEA Research & Evaluation Dept.

NOTE3: Fiscal Year refers to the fiscal period that ended June 30 or August 31.

NOTE4: FSP Refresh Date: 09/24/2021

Example

Texas Education Agency
PDM2-100-012
v22.2.2

TSDS PEIMS MID-YEAR FINANCIAL ACCOUNTABILITY RATING INDICATORS LEA-level Data

Thursday 12/09/2021 8:54 AM
Page 1 of 1

LEA: [Redacted] 2021 - 2022 Mid Year Collection, First Submission: Fiscal Year 2021
Unallocated

LEA ADA	Administrative Cost Ratio	Acceptable Administrative Cost Ratio	LEA Student Count	Investment Earnings Per Student
54	0.1112	0.2654	2,996 \$	159.3795

Administrative Cost Standards	
Enrollment (ADA)	Standard
10,000 and above	0.1105
5,000 to 9,999	0.1250
1,000 to 4,999	0.1401
500 to 999	0.1561
Less than 500	0.2654
* Sparsity Adjustment Value	0.3614

*Administrative Cost Ratio should be less than the standard
NOTE: Fiscal Year refers to the fiscal period that ended June 30 or August 31
NOTE2: FSP Refresh Date: 09/24/2021

Example

Texas Education Agency
PDM2-100-018
v22.2.1

TSDS PEIMS SHARED SERVICES ARRANGEMENT DATA
LEA-level Data

Thursday 12/09/2021 8:59 AM
Page 1 of 1

2021 - 2022 Mid Year Collection, First Submission: Fiscal Year 2021

LEA: 108905 - [REDACTED]

District ID	Shared Services Arrangement Type Code	Fiscal Agent District ID
108905	10	108906

Example

Texas Education Agency
PDM2-101-002
v22.2.2

TSDS PEIMS ACTUAL COMPLIANCE REPORT - GENERAL FUND

Campuses: All Campuses
LEA-level Data | All Reports

Thursday 12/09/2021 2:21 AM
Page 7 of 12

2021 - 2022 Mid Year Collection, First Submission: Fiscal Year 2021

LEA:

Allocated Funds Only

Direct Costs:	PIC 21 Gifted & Talented	PIC 22 Career & Technical	PIC 23 Special Education	PIC 24 Accelerated Education	PIC 25 Bilingual & Spcl La	PIC 26 AEP Services	PIC 28 DAEP Basic	PIC 29 DAEP Supplemental	PIC 30 Title 1 Part A
11 Instruction	\$ 85,127	\$ 3,797,665	\$ 4,415,267	\$ 2,794	\$ 1,505,413	\$ 0	\$ 0	\$ 0	\$ 4,740,875
12 Inst Res/ M	0	3,972	12,776	0	22,738	0	0	0	167,493
13 Cur/ Stf Dev	45,853	51,193	87,170	526	271,988	0	0	0	1,106,095
21 Inst Leade	5,986	50,543	403,015	5,731	59,127	0	0	0	38,548
23 Schl Leade	0	387,716	716,673	0	176,120	0	0	0	387,645
31 Guid/ Counsl	175	390,943	2,106,952	0	77,321	0	0	0	185,080
32 Soc Wk Svc	0	0	0	0	0	0	0	0	0
33 Health Svc	0	49,915	97,011	0	22,204	0	0	0	263,288
35 Food Svc	0	0	0	0	0	0	0	0	0
36 Co/ Ext Actv	0	0	0	0	0	0	0	0	0
51 Facilities Maint	0	0	1,969	0	0	0	0	0	9,176
52 Secur/ Mon S	0	0	0	0	0	0	0	0	0
53 Data Proc S	0	0	146,730	0	0	0	0	0	0
61 Community S	0	0	0	40	0	0	0	0	232,586
71 Debt Svc	0	0	0	0	0	0	0	0	0
Total Direct	137,141	4,731,948	7,987,564	9,091	2,134,912	0	0	0	7,130,787

Resource:

☐ [TASBO Article](#) on Spending Compliance

Other Reporting Tools

Forecast 5 Analytics



Visuals Stories Create Workbooks Custom Content

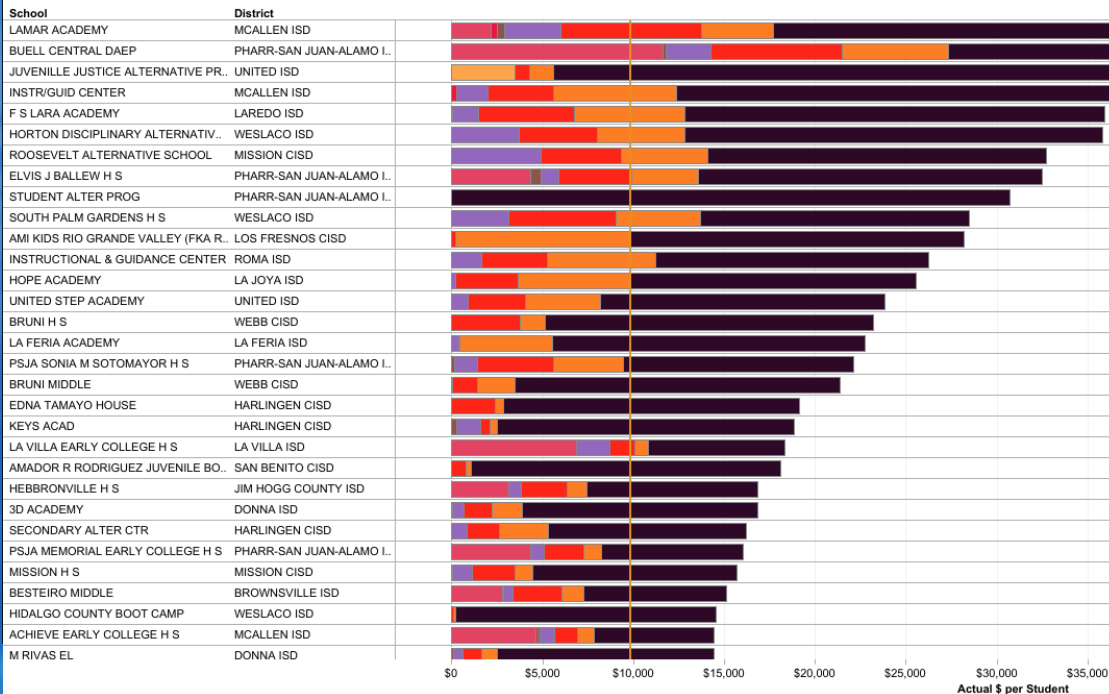
Undo Redo Revert Refresh Pause

Peer Group:

Campus per Student Spend by Function

2020

Source: TEA PEIMS Data



Powered By:

OnDataSuite

12/9/21, 9:29 AM

Per Pupil Expenditures All Funds for 2019 - 2020

Per Pupil Expenditures All Funds for 2019 - 2020 for
Fall Enrollment: 15,577
Per-Pupil Total: \$11,995.29
Total Cost: \$186,850,665.00

Object Code	Object Code Desc	Per Pupil	Total Actual Amount
6100	Payroll Costs	\$0.00	\$0.00
6112	Sal/Wages-Sub Teachers & Other Prof	\$65.85	\$1,025,802.00
6119	Sal/Wages-Teachers & Other PP	\$5,542.36	\$86,333,316.00
6121	Extra Duty/OT-Support Persnl	\$84.25	\$1,312,379.00
6122	Sal/Wages for Substitute Support Pers...	\$11.39	\$177,405.00
6129	Sal/Wages-Support Personnel	\$1,605.65	\$25,011,287.00
6131	Contract Buyouts	\$0.00	\$0.00
6132	\$1000 TRS Supplemental Compensation U...	\$0.00	\$0.00
6139	Employee Allowances	\$2.10	\$32,692.00
6141	Social Security/Medicare	\$95.61	\$1,489,333.00
6142	Group Health & Life Insurance	\$636.77	\$9,918,907.00
6143	Workers' Compensation	\$28.48	\$443,681.00
6144	TRS Care On-Behalf Pymts	\$508.62	\$7,922,741.00
6145	Unemployment Compensation	\$4.45	\$69,371.00
6146	Teacher Retirement/TRS Care	\$299.53	\$4,665,725.00
6149	Employee Benefits	\$7.16	\$111,525.00
6200	Professional And Contracted Services	\$0.00	\$0.00
6211	Legal Services	\$28.23	\$439,766.00

Other Reporting Tools

☐ Region One Budgeting Tools

Thank-you!



PEIMS ESC1 Contacts:

Diana Perez
dperez@esc1.net
956-984-6096

Dr. Bryan Walker
bwalker@esc1.net
956-984-6090

Finance ESC1 Contact:

Rumalda Ruiz
Deputy Director for Business, Operations, Finance
rruiz@esc1.net
(956) 984-6290